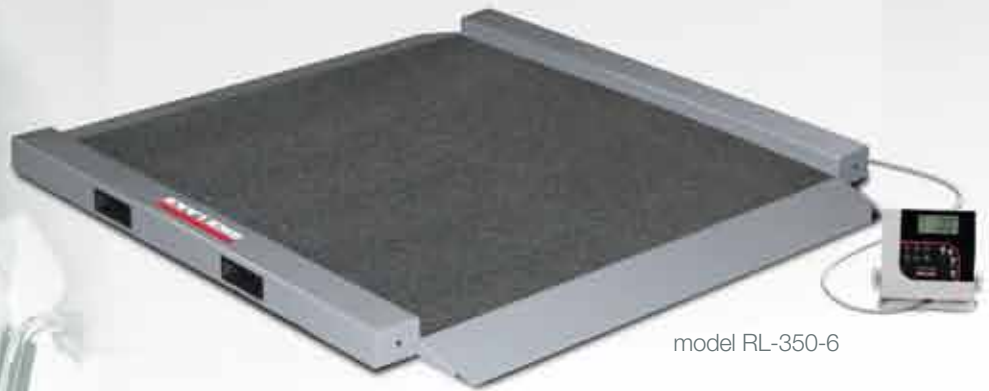


wheelchair scales

model 350-10-3



model RL-350-6



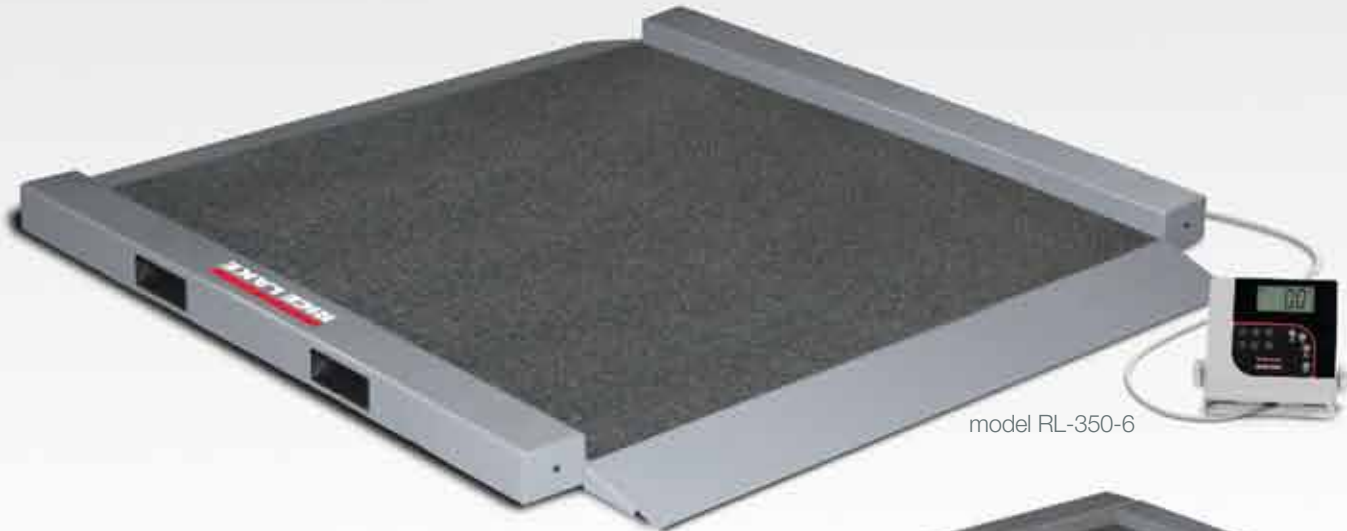
RICE LAKE[®]
HEALTH SOLUTIONS

To be the best by every measure[®]

www.ricelake.com/health

Rice Lake **wheelchair** scales

RICE LAKE offers a full lineup of wheelchair scales from single ramp to dual ramp with chair. Each model is designed and built to weigh accurately, safely and dependably. Motiontrap™ adjusts for involuntary movement and keyboard tare efficiently reduces errors and patient transfers. Smart designs make these scales easy to move, maintain and store.



model RL-350-6



model RL-350-5

Capacity	1000lb (450kg)
Graduations	0.2lb (0.1kg)

Model RL-350 Series Standard Features



- Capacity: 1000lb x 0.2lb (450kg x 0.1 kg)
- Platform weighing dimensions: 34 in x 34 in
- Anti-slip rubber surface on platform
- Integral handles and wheels for ease of portability
- Motiontrap (movement compensation technology)
- Large 1 inch LCD display
- Ability to manually enter the tare weight of a wheelchair
- Hold function
- BMI (body mass index) function
- Unit of measure: lb only, kg only, lb/kg
- EMR capable, USB
- Powered by 6 AA batteries (included)
- 10 ft cable between scale base and indicator

RL-350-5

- Single ramp

RL-350-6

- Dual ramp

Options/Accessories

- AC adaptor



Indicator and cable secure to base for safer movement and storage.



model 350-10-3

model 350-10-4



model 350-10-2

Capacity	1000lb (450kg)
Graduations	0.2lb (0.1kg)



Model 350-10 Series
Standard Features



- Capacity: 1000lb x 0.2lb (450kg x 0.1kg)
- Platform weighing dimensions: 29.5 in x 32 in
- Two wheels for ease of portability
- Motiontrap (movement compensation technology)
- Large 1 inch LCD display
- Ability to manually enter the tare weight of a wheelchair
- BMI (body mass index) function
- Hold function
- Unit of measure: lb only, kg only, lb/kg
- Non-skid platform
- EMR capable, USB
- Powered by 6 AA batteries (included)

Single Ramp Platform (Model 350-10-7)

- 6.5ft cable between scale base and indicator
- Single ramp for on/off access

Single Ramp Handrail (Model 350-10-2)

- Single ramp for on/off access

Dual Ramp Platform (Model 350-10-8)

- 6.5ft cable between scale base and indicator
- Dual ramp

Dual Ramp Handrail (Model 350-10-3)

- Dual ramp

Dual Ramp Handrail with Seat (Model 350-10-4)

- Includes padded, fold-away chair with back rest
- Dual ramp

Options/Accessories

- AC adaptor

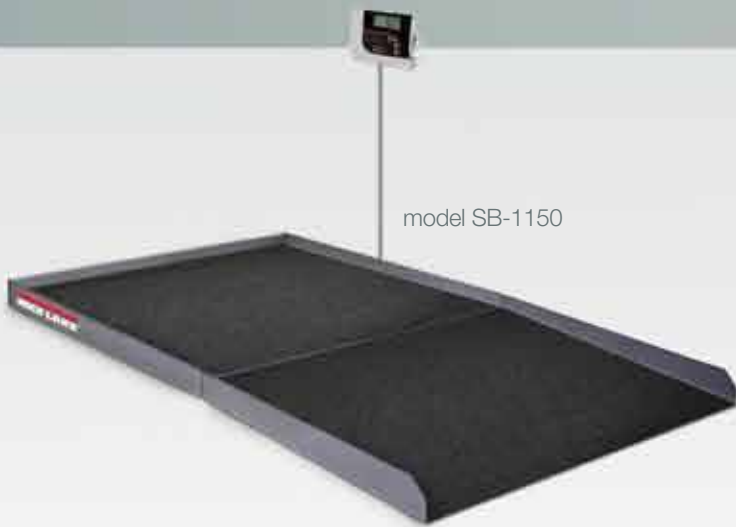


model 350-10-8



model 350-10-7

Rice Lake **wheelchair** scales



model SB-1150

Capacity	1000lb (450kg)
Graduations	0.2lb (0.1kg)



model SD-1150-WP

Capacity	1000lb (450kg)
Graduations	0.2lb (0.1kg)

Scale is flush mounted with the floor.

THE HEAVY-DUTY SB-1150 BARIATRIC SCALE easily accommodates wheelchairs with its large platform size and easy access ramp. To maximize safety, the scale and ramp are equipped with a non-skid rubber surface and guide rails on the sides.

Bariatric/Wheelchair Scale SB-1150



- Standard Features
- 36in W x 36in L - 1,000lb mild steel painted scale with anti-slip rubber surface and three-sided safety rails
 - Access ramp 36in W x 28.5in L with anti-slip rubber surface
 - Motiontrap (movement compensation technology)
 - Large 1 inch liquid crystal display (LCD)
 - EMR capable, USB
 - Push-button or manual entry of tare weight
 - Unit of measure: lb only, kg only, lb/kg
 - 10ft interface cable from scale to indicator
 - Powered by 6 AA batteries (included)
 - BMI (body mass index) function
 - Hold function

Options/Accessories

- AC adaptor

THE SD-1150-WP DIALYSIS WHEELCHAIR SCALE is ideal for dialysis clinics. Large 36in x 36in 1,000lb mild steel platform easily accommodates dialysis chairs as the scale is mounted.

Dialysis Scale SD-1150-WP



- Standard Features
- 36in W x 36in L - 1,000lb mild steel painted scale with anti-slip rubber surface and pit frame
 - 36in H x 30in L handrail and mounting hardware
 - Motiontrap (movement compensation technology)
 - Large 1 inch liquid crystal display (LCD)
 - EMR capable, USB
 - Push-button or manual entry of tare weight
 - Unit of measure: lb only, kg only, lb/kg
 - 10ft interface cable from scale to indicator
 - Powered by 6 AA batteries (included)
 - BMI (body mass index) function
 - Hold function

Options/Accessories

- AC adaptor

Your Rice Lake Weighing Systems distributor is:

RICE LAKE
HEALTH SOLUTIONS

To be the best by every measure®

230 W. Coleman St. • Rice Lake, WI 54868 • USA
TEL: 715-234-9171 • FAX: 715-234-6967 • www.ricelake.com

An ISO 9001 registered company © 2013 Rice Lake Weighing Systems PN 115157 2/13
Specifications subject to change without notice.